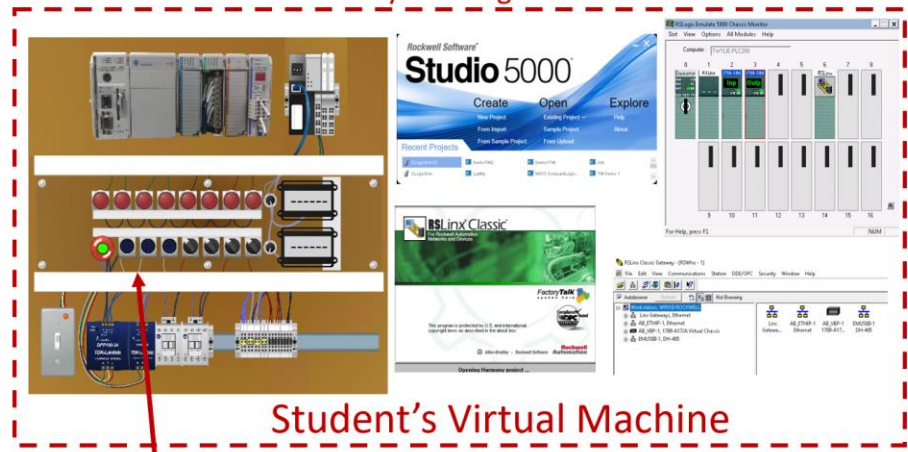


Student Virtual Machine allows access to PLC Software 24/7

PLC Hardware Trainer



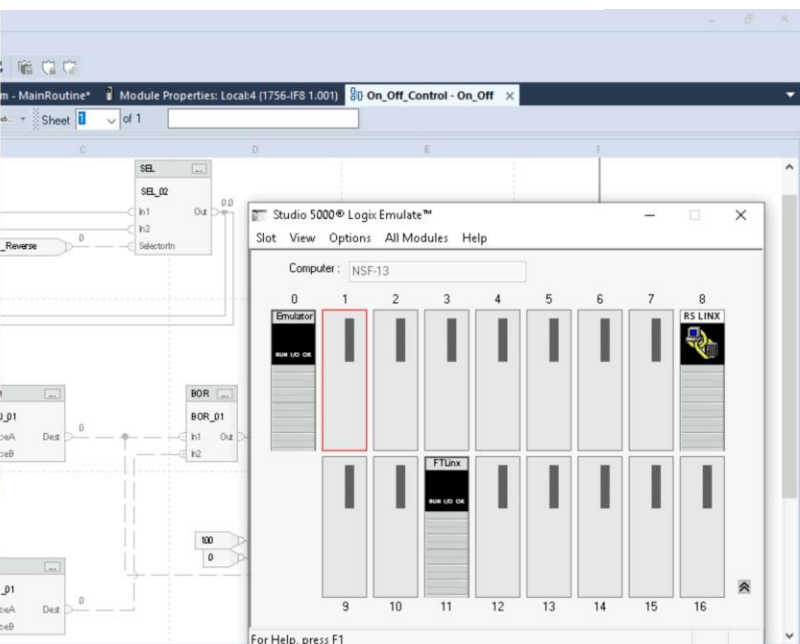
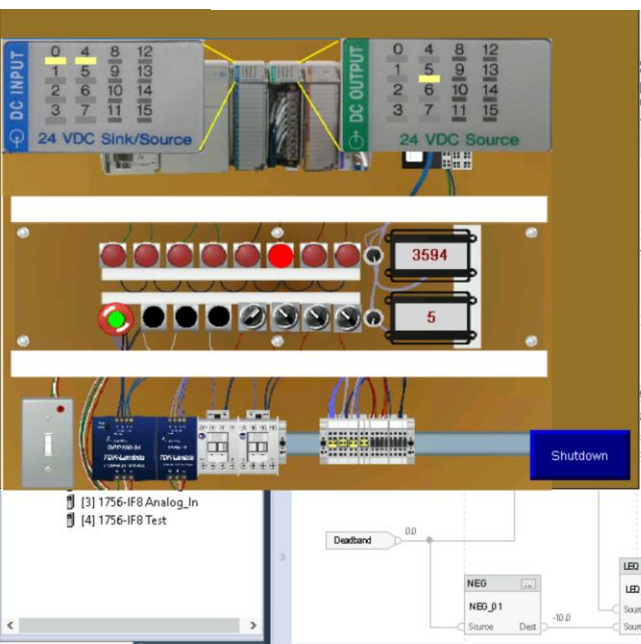
The content of the virtual machine will have all of the same functionality as being in the PLC Lab



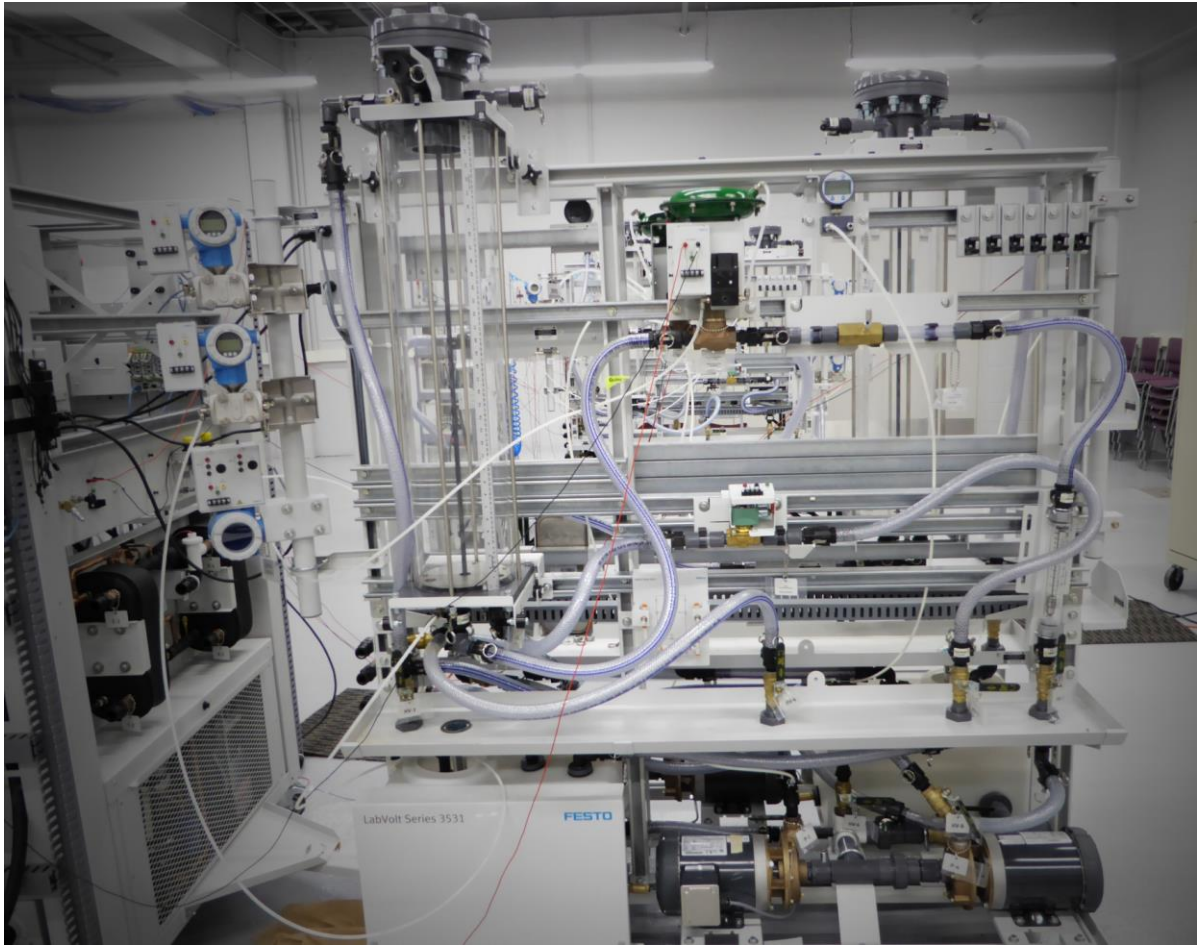
Student's Virtual Machine



Virtual PLC Simulator communicating to Processor in the Virtual Backplane in a Student Virtual Machine



Festo Process Control Training Unit



South Arkansas CC Distributed Control System

