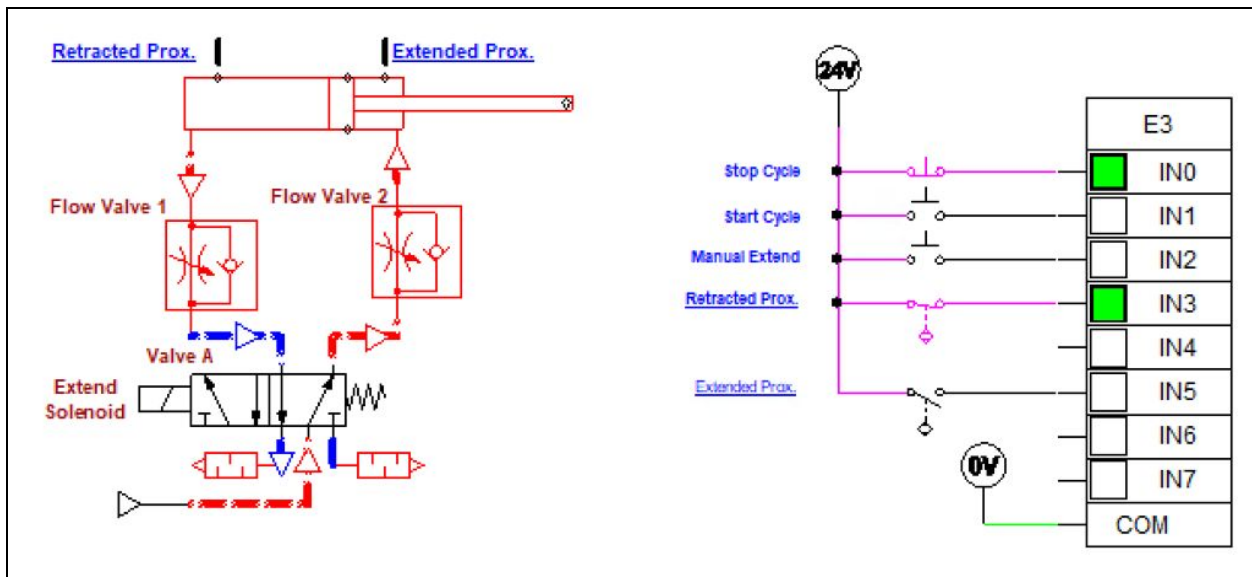


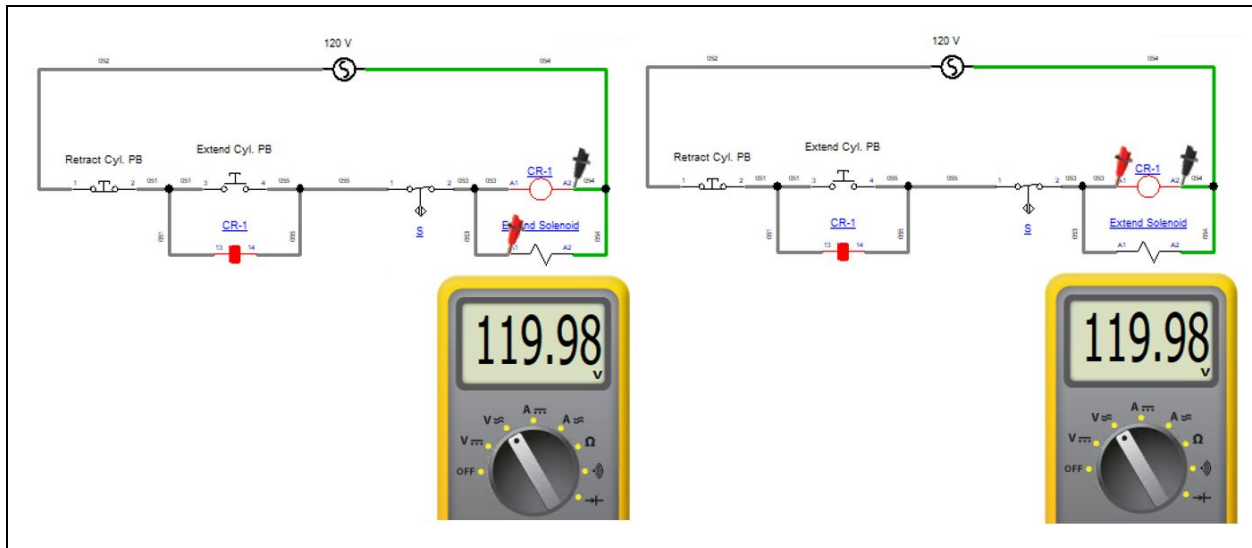
1. With the Stop Cycle push button activated, which one of the contacts marked with a number will have a highlight? (PQ3_13)

- a. 1
- b. 2
- c. Both 1 and 2 are highlighted
- d. Neither 1 nor 2 will be highlighted



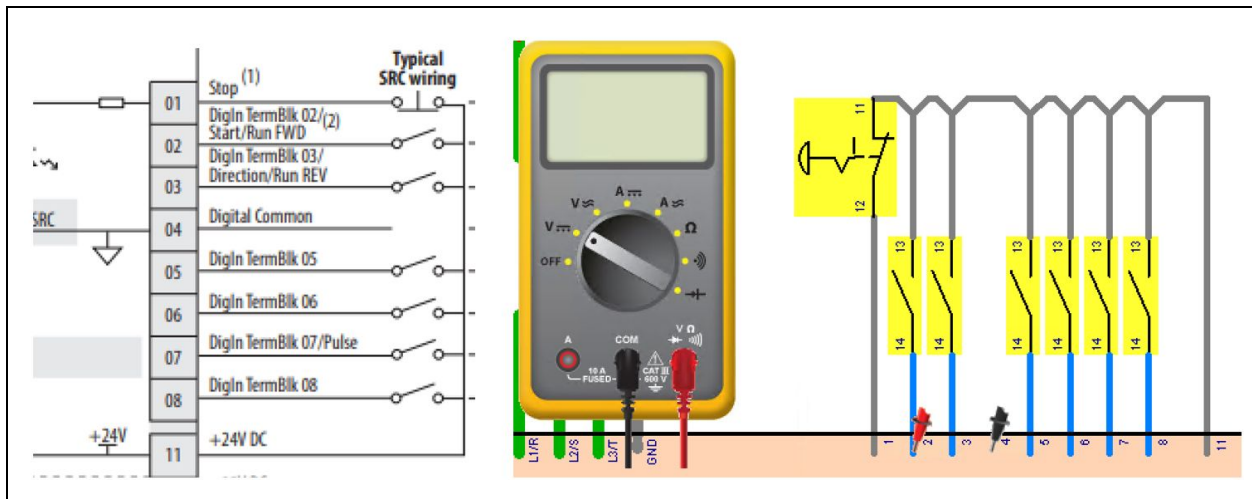
9. Based on the input indicator lights on the PLC input module, what would be the position of the cylinder rod for the pneumatic circuit? (QP4_9)

- a. Fully retracted
- b. Fully extended
- c. Retracting, but not fully retracted
- d. Extending, but not fully extended



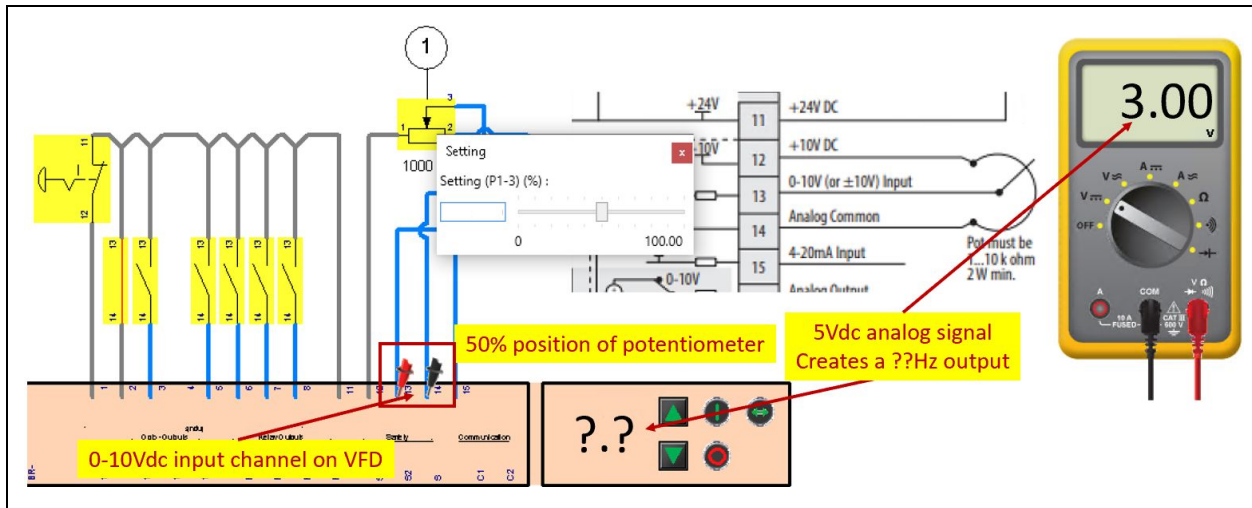
3. The Extend Solenoid is not shifting the pneumatic valve. What could be wrong based on the readings of the two meters?

- The CR-1 coil is open
- The Extend Solenoid coil is open
- The proximity switch is faulty and will not pass current flow
- The hold-in contact (CR-1 is faulty)



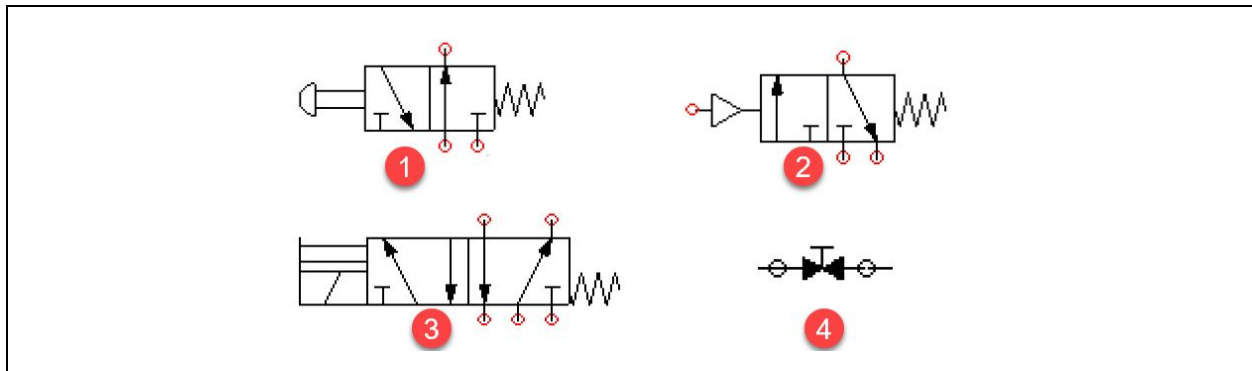
4. What voltage should the multimeter read in this illustration (the meter probes are on terminals 2 & 4)?

- 0 V
- 24 Vdc
- 162 Vdc
- 400 Vdc



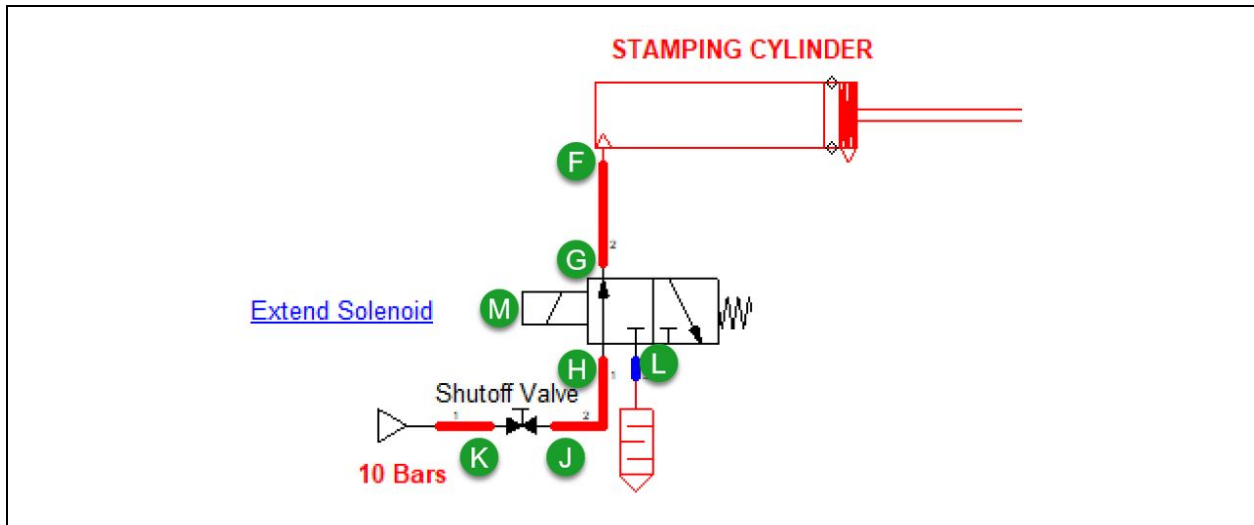
5. What will be the output frequency on this VFD, if 3 Vdc is on the analog input channel?

- a. 20 Hz
- b. 18 Hz
- c. 12 Hz
- d. 24 Hz



6. The valve marked with a “2” would be termed a:

- a. Normally-open valve
- b. Normally-closed valve
- c. Shuttle valve
- d. Flow control valve



7. What should be the air pressure measured at the port marked with a “G”?

- a. 0 psi
- b. 73 psi
- c. 145 psi
- d. None of the listed options